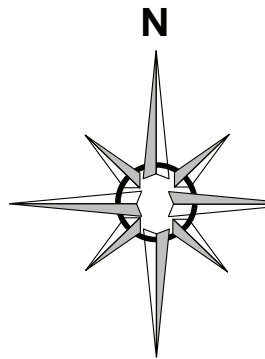
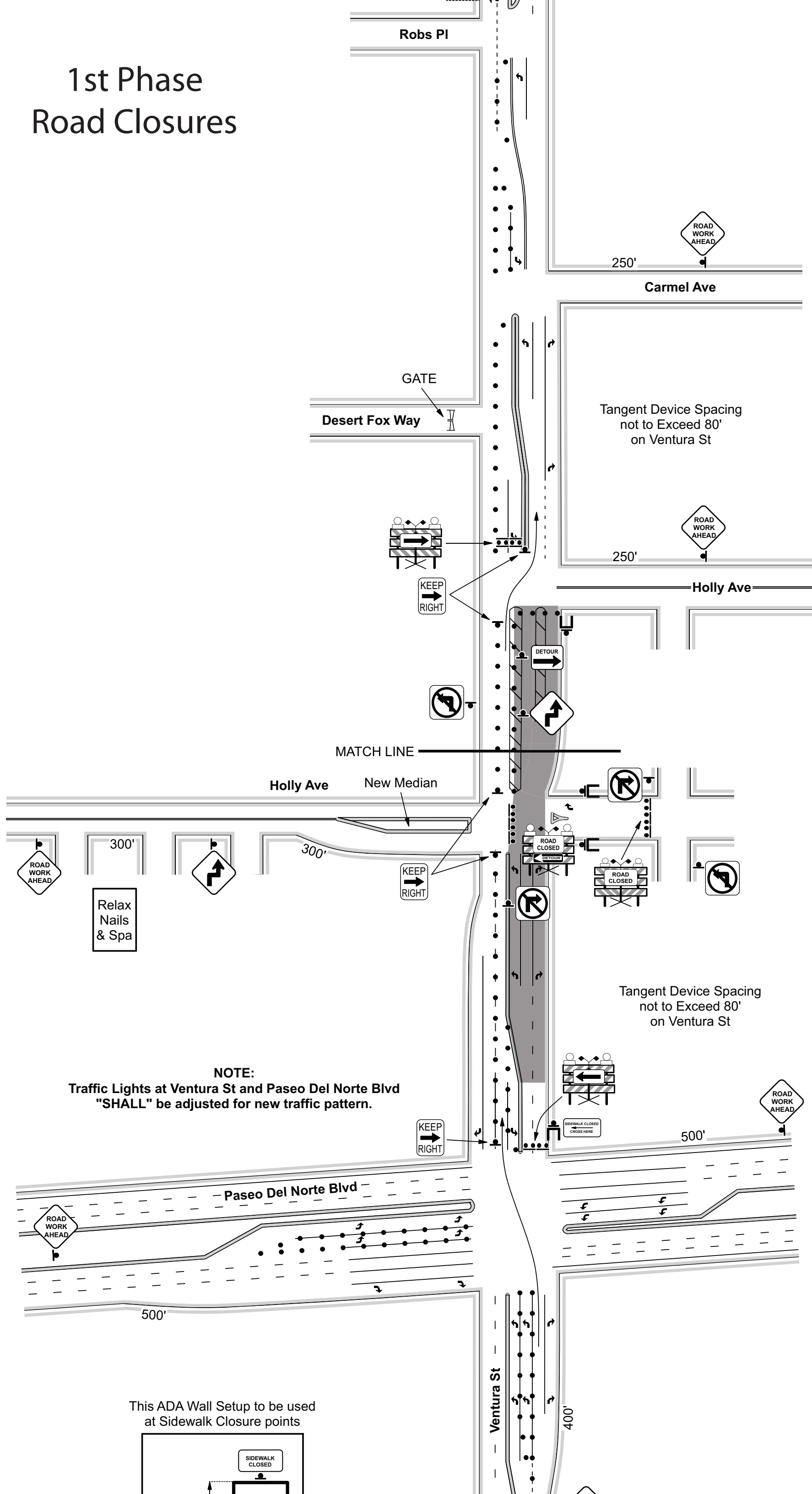
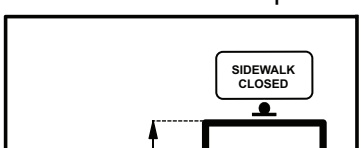


1st Phase Road Closures



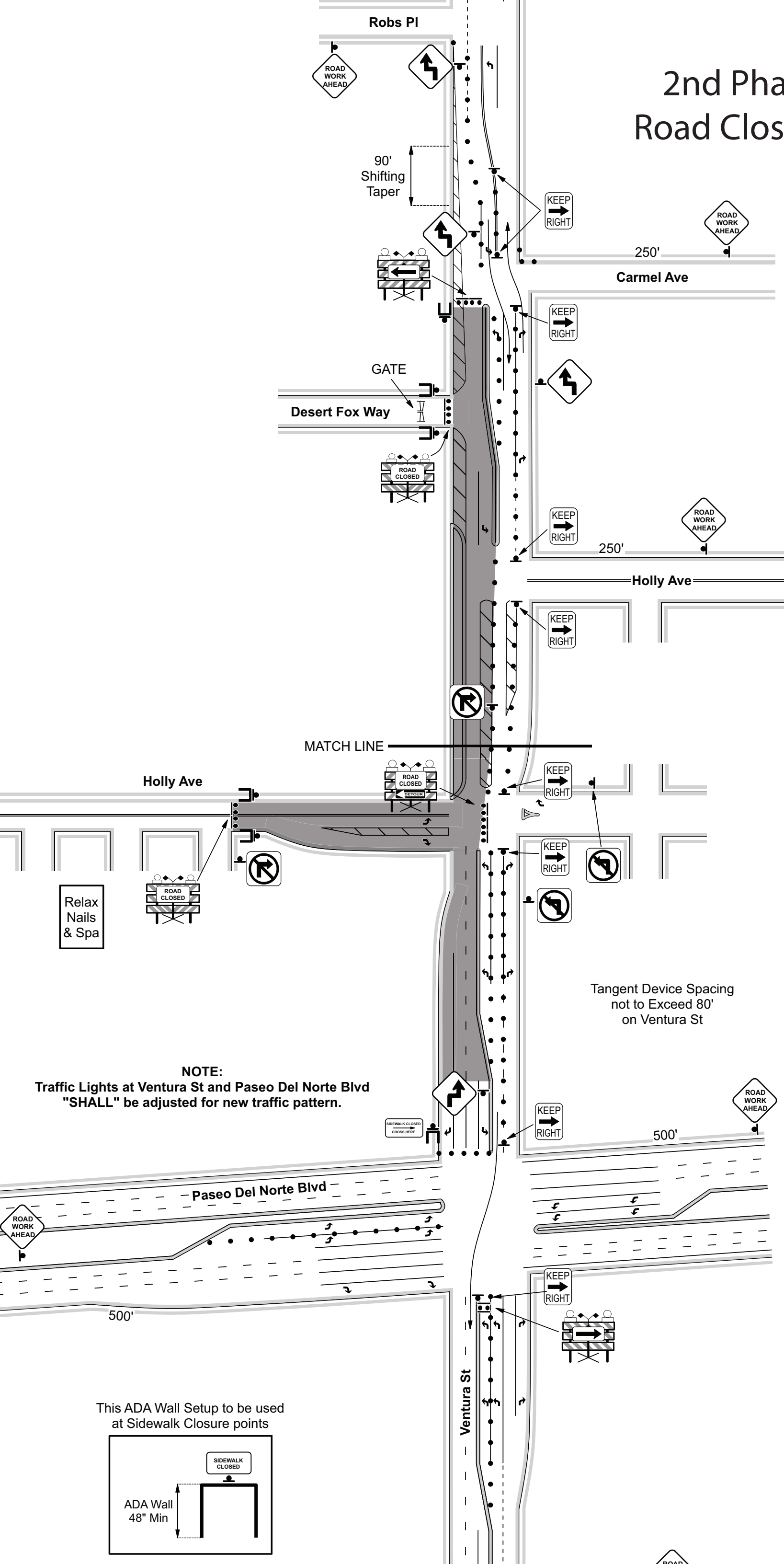
NOTE:
Traffic Lights at Ventura St and Paseo Del Norte Blvd "SHALL" be adjusted for new traffic pattern.

This ADA Wall Setup to be used at Sidewalk Closure points



ions	By						Designed For	 HB CONSTRUCTION <small>Passion Community Trust</small>
	IS							
	IS							

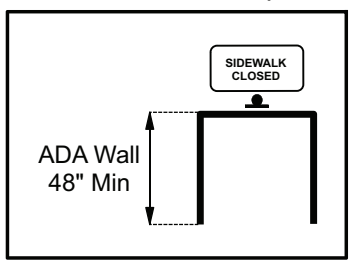
2nd Phase Road Closures



NOTE:
Traffic Lights at Ventura St and Paseo Del Norte Blvd "SHALL" be adjusted for new traffic pattern.

Relax Nails & Spa

This ADA Wall Setup to be used at Sidewalk Closure points



Revisions		Designed For	
No.	Date	By	
1	8/29/22	IS	
2	9/08/22	IS	

